

Exmouth—then and now

It was in some cases impossible to stand in the original photographer's position. In other cases, standing in the same spot would have revealed nothing and so "today's" photographer took a view that showed a recognizable feature. However, he was never far from where the original photographer had stood.











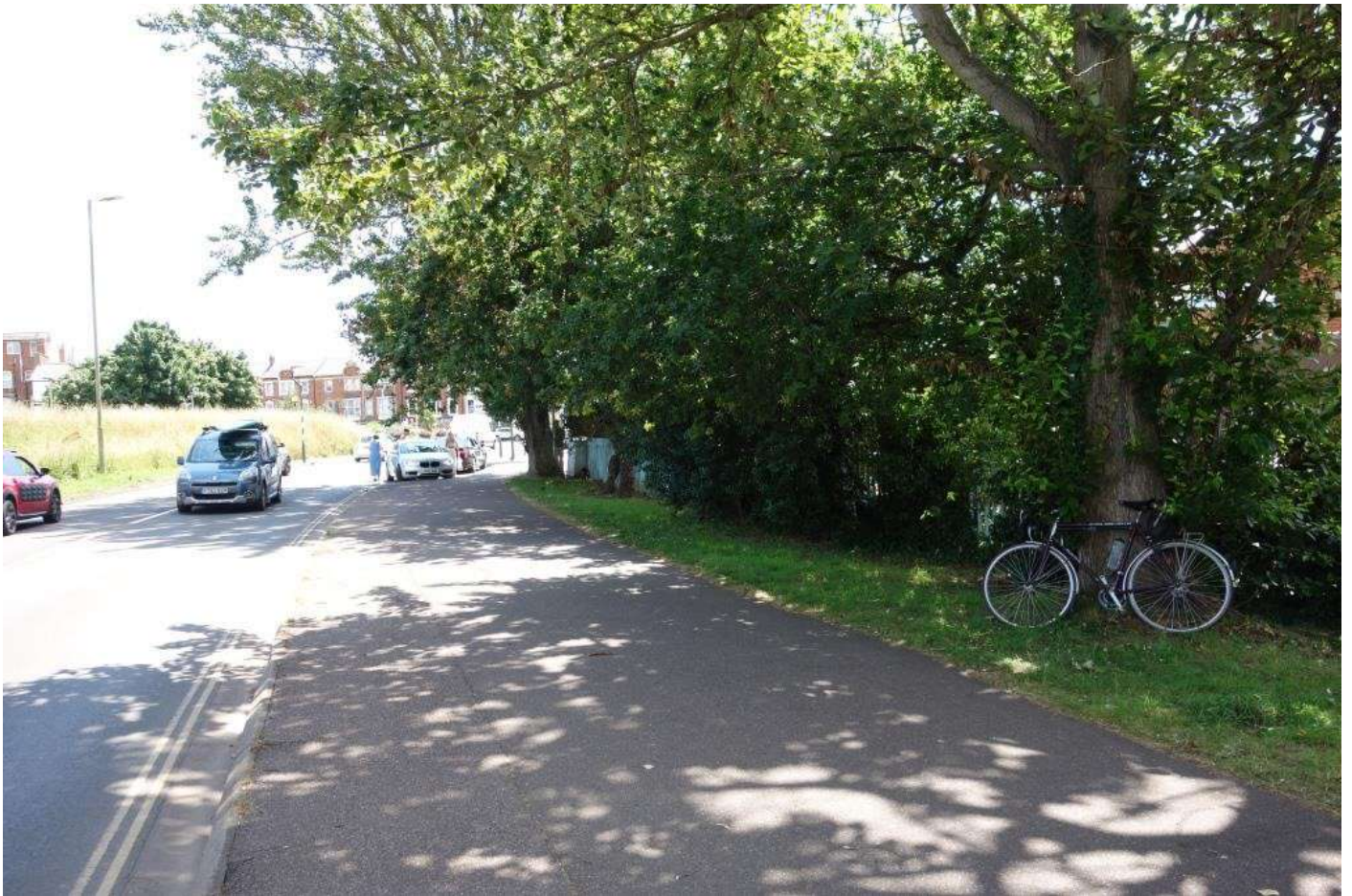






Today's photo is taken looking in the opposite direction. The wall at right, above, which was once behind the loco shed is seen below at centre. The footpath follows the same course alongside the wall today.

















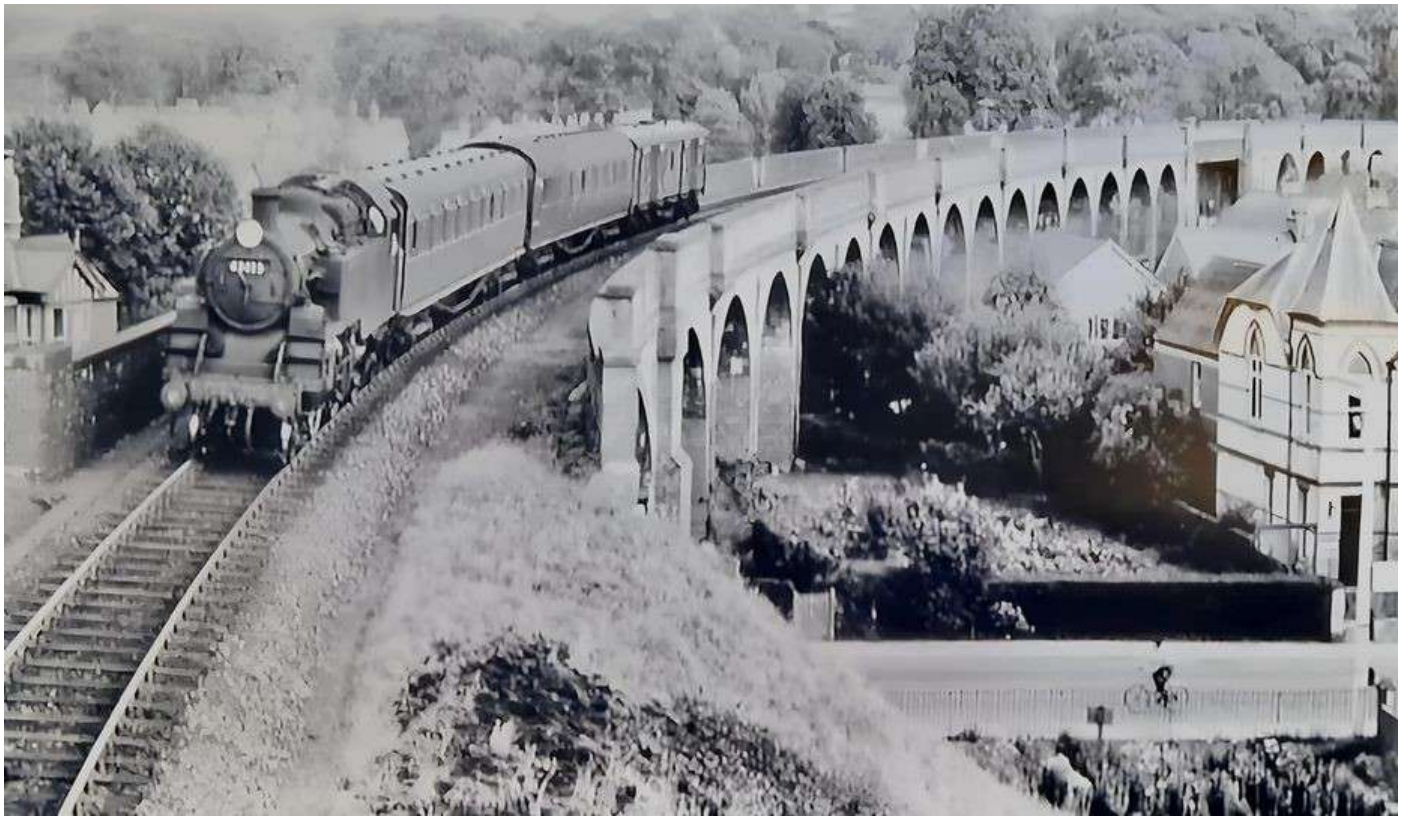




The Hartopp Road Sewage Pumping Station at right, above, remains a distinctive building today and is just visible in the trees below.







It is not possible to view from these places today.























